

Welcome to WFD

West Florida Division Network of Care

Legacy Hospitals through 2009



Zephyrhills



Sebring



Lake Placid



Wauchula

From UCH in 2010



Tampa



Connerton



Carrollwood



North Pinellas

Built in 2012



Wesley Chapel

From CHS in 2018



Dade City



Ocala

From CHS in 2019



Heart of Florida

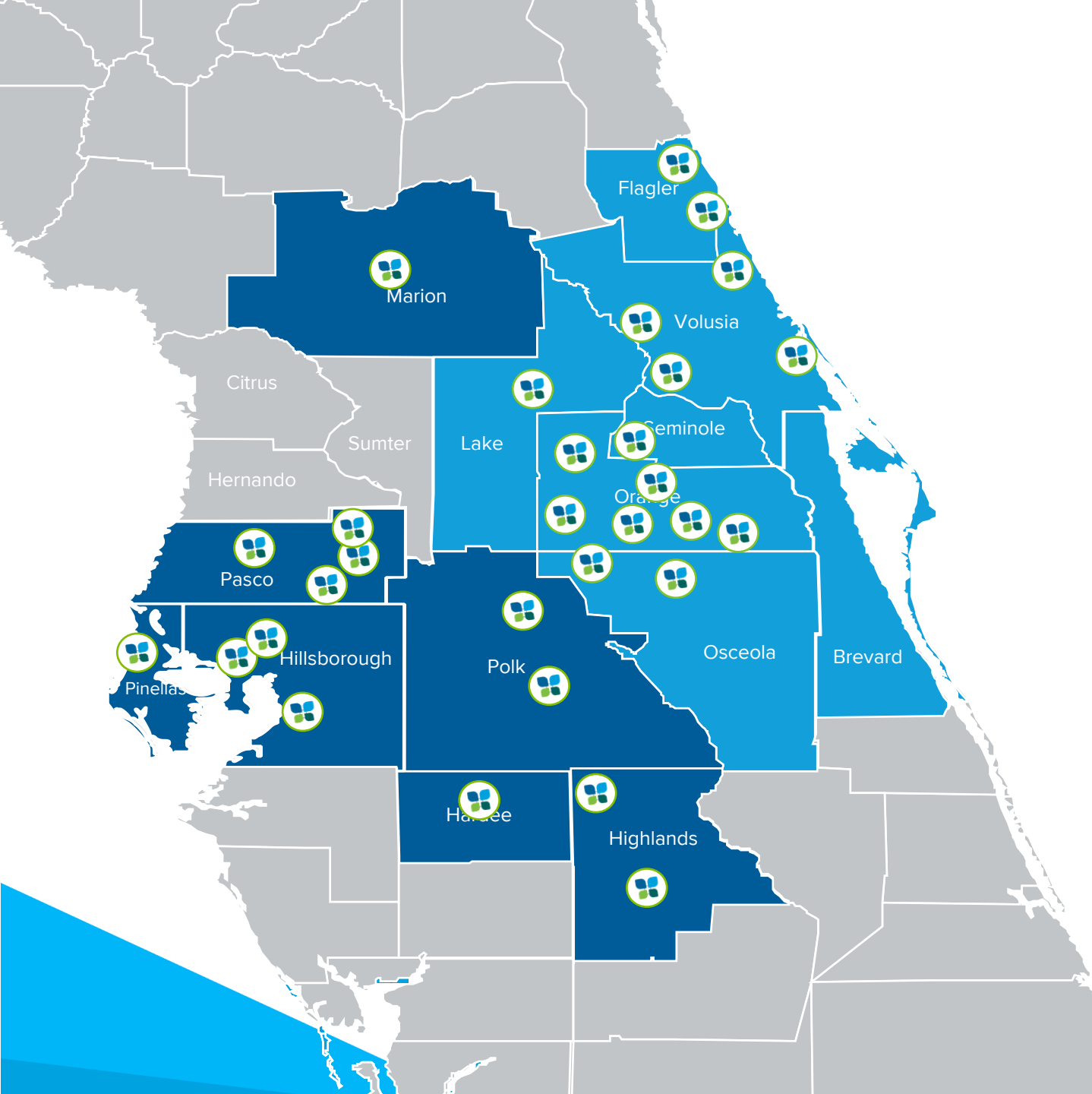


Lake Wales

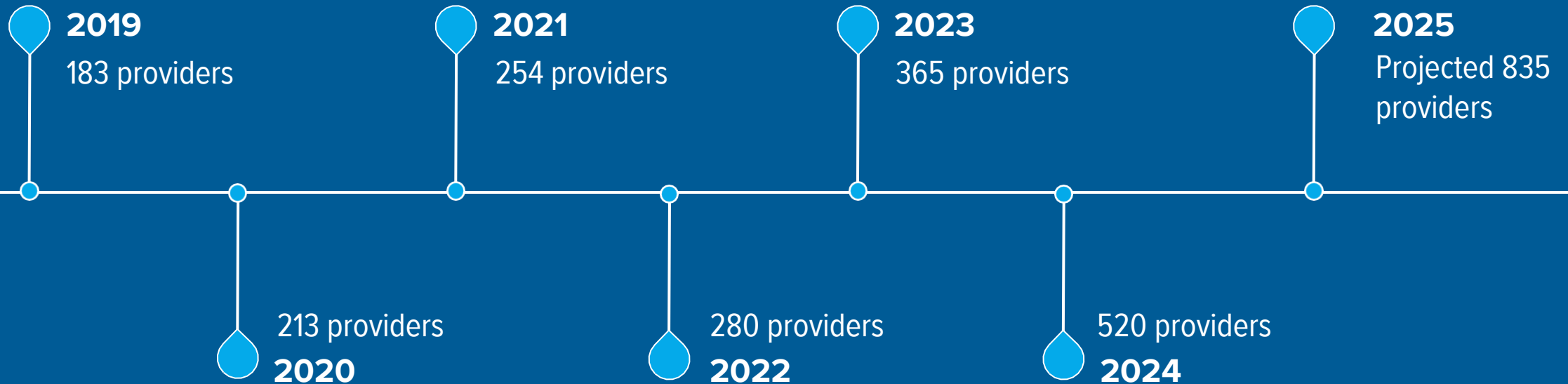
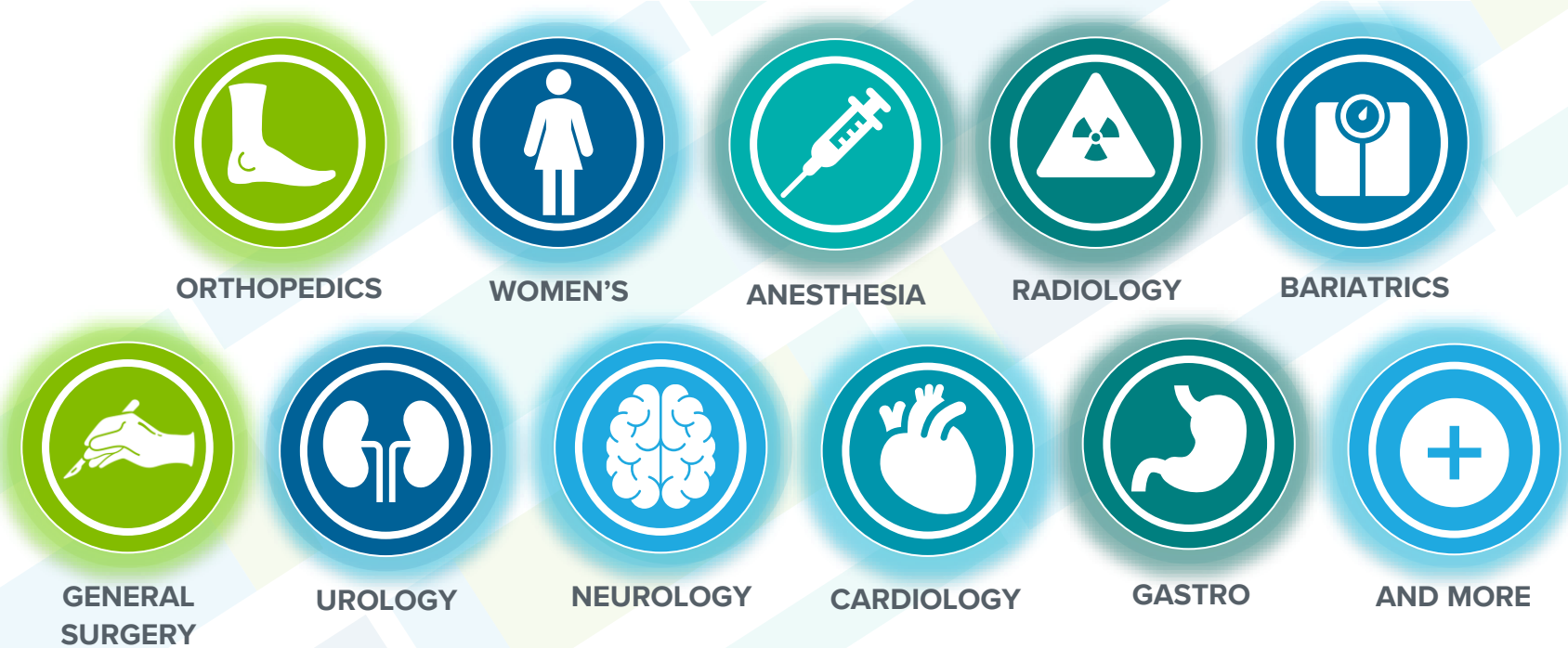
Built 2024



Riverview



West Florida Growth



AHMG and WFD Overview

AHMG Overview

- Multispecialty Medical Group
 - ❖ **580** Providers with **1400** staff employees
 - ❖ **100+** Locations (**5** Large Centers)
 - Imaging (**5**)
 - Lab (**20**)
 - Physical Therapy Centers (**38**)
 - ❖ **40+** medical specialties
- 2024 Annual Revenue: ~**\$172M**

AHMG WFD Specialties

- | | | |
|---|--|----------------------------------|
| ✓ Acute Care | ✓ Dietician/
Nutrition | ✓ Neurology |
| ✓ Anesthesiology | ✓ Electrophysiology | ✓ Obstetrics &
Gynecology |
| ✓ Adult Health &
Medicine | ✓ Endocrinology | ✓ Orthopedic &
Spinal Surgery |
| ✓ Bariatric | ✓ Family Medicine | ✓ Otolaryngology |
| ✓ Bariatric &
General Surgery | ✓ Gastroenterology | ✓ Pediatrics |
| ✓ Breast Surgery | ✓ General Surgery | ✓ Podiatrist |
| ✓ Cardiovascular
Disease | ✓ Internal &
Palliative
Medicine | ✓ Pulmonary
Disease |
| ✓ Clinical Cardiac
Electrophysiology | ✓ Interventional
Cardiology | ✓ Rheumatology |
| ✓ Colon & Rectal
Surgery | ✓ Interventional
Neuroradiology | ✓ Speech Pathology |
| ✓ Dermatology | ✓ Maternal-Fetal
Medicine | ✓ Thoracic Surgery |
| ✓ Diabetes &
Endocrinology | ✓ Neurological
Surgery | ✓ Urogynecology |
| | | ✓ Urology |
| | | ✓ Vascular Surgery |
| | | ✓ Wound Care |

What This Means for You

Putting Patients First — Always

Supporting the “One-Stop Shop” That Works

Honoring Bond’s Legacy

Growing Together



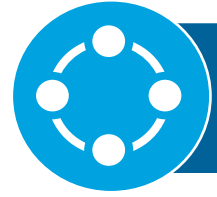
Moving Forward – Together



Enhancing Systems and Technology



Opportunities to Learn and Grow



Creating Consistency Through Standardization



Stronger Infrastructure and Support

WFD | Cabinet Structure (Non-Acute)

